

# DIAMES® Advanced Production Scheduler

The Advanced Production Scheduler (“APS”) is a graphical finite planning tool with a simple and effective MS-Windows based GUI that is complementary to the DIAMES® family of products. The production planner deals with problems that were identified by the APS and that are related to deadlines and the sequence of operations by optimizing the interdependent production programs of the different work centers. The planner can quickly and easily modify the sequence of shop order operations. He eliminates bottlenecks related to the respective production resource by transferring the respective shop order operations to other work centers. The graphical interface of the APS offers a choice of two views:

- a view showing the shop order operations that have already been assigned and that are sorted per work centre, i.e. the effective production schedule.
- a view showing released shop order operations that have not yet been assigned and that are sorted in operation sequence order.

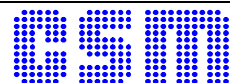
In an online dialog session with the DIAMES® server the planner selects work centers with the respective production schedules or production orders with unassigned operations. Selections that are frequently required may be saved as separate profiles. The user defines the starting date and the period for the view.

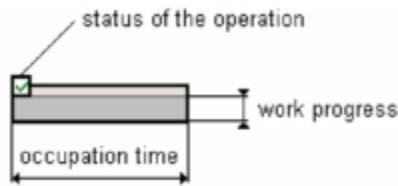
The sequential position of an operation within a production order and the individually allocated timeframe of any operation are indicated by specific color coding as explained on the next page. This also applies to the up-to-date work status. General functions for specific presentation forms or global data manipulation are standard features.



The user retrieves or returns up-to-date data from/to the DIAMES® server at any time, either manually or even automatically under certain circumstances. This ensures that the view displayed by the APS is always up-to-date, matching the real-world production schedule and progress.

Shift schedules are displayed in the background as a colored grid. For this purpose, the APS retrieves the list of the weekly events and special days from the DIAMES® server.





The DIAMES® server validates all APS transactions. The color that the APS assigns to operations indicates the date/time of the operation with respect to the scheduled timeframe. The color also shows the sequential relationship with respect to the preceding operation of the same shop order. The job occupation time displayed by the APS depends on parameter settings and the effective work in progress.

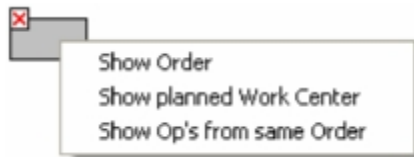
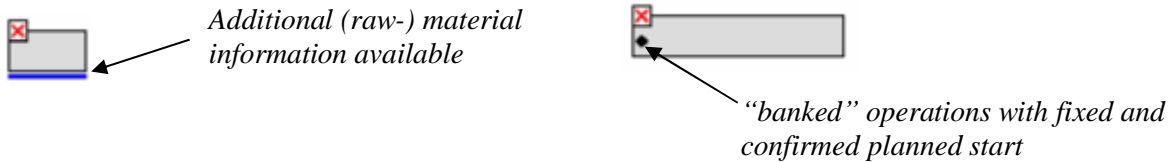
### Status of the operation

- ▶ Active
- ✗ Never started, still locked
- || Interrupted
- ✓ Never started, ready

### Colors assigned in accordance with schedule

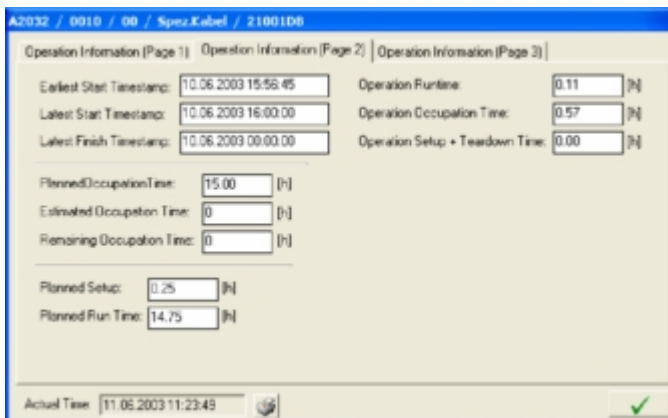
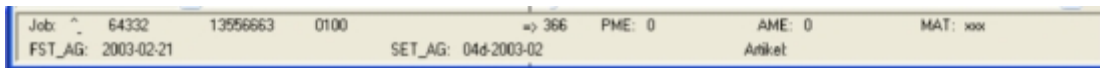
- Too early
- O.k.
- Overdue
- Sequence-error with respect to the operation that immediately precedes the current one.

### Special operation (job) signatures and context menu



A right-click on a selected operation displays a context menu. This context menu provides access to predefined sorting and presentation functions.

A single click with the left mouse key on an operation displays the respective key-information at the bottom of the view; e.g.:



A double-click on an operation opens a text box containing detailed information on the planned and actual properties of the respective operation.

