

# DIAMES<sup>®</sup> Manufacturing Execution Manager

The DIAMES Manufacturing Execution Manager (MEM) is an MS-Windows-based tool to visualize and manage shop-floor activities online. As part of the DIAMES Product Portfolio the MEM provides online transparency to the entire production process and its workflow. Production-related staff members immediately become aware of random bottlenecks and exceptions as they occur on the shop floor. Such information, combined with personal experience, is the key to manage any activity at shop floor far more effectively. The result is a significant increase in productivity and shorter order throughput times - without any additional resources.

In office environments the Manufacturing Execution Manager is used on individual PCs. On the shop floor the application is available on touch screen devices located at prominent positions. Authorized staff have access to past, actual and planned production information. Combined with the personal business experience such online information is an opportunity to optimize the usage of any manufacturing resources like men, machinery, tools and material far more effectively.

Supervisors and managers have access to business critical production information; either conveniently from their offices or remotely via a secure internet-based VPN connection.

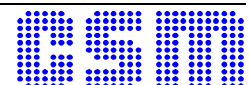
Workcenter Name	Exception ID	Exception Description	Exc. Lev	Exception Last Occurred	Exception First Occurred	Confirmation PD	Confirmation Timestamp
PR1209	E0M1	Start an Operation ...	1	2003-10-24 09:16:37	2003-10-24 09:16:37	T000001	2004-01-16 12:26:55
PR1324	E0M6	MIC back ON LINE ...	2	2003-10-22 07:50:10	2003-10-21 13:33:16	T000001	2004-01-16 12:27:55
PR1324	E0M0	Detector Plug out	14	2004-01-16 12:25:00	2004-01-10 15:10:55		0003-00-00 02:00:00
PR1324	E0M1	Start an Operation ...	2	2004-01-16 12:10:48	2003-10-24 16:33:27		0003-00-00 02:00:00
PR1324	E0M0	Running without Cps.	11	2004-01-16 12:13:13	2004-01-16 10:32:14	T000001	2004-01-16 12:26:38

Order: 2003102015 Op: ### Item Ref: SYSTEM CREATED JOB AOV: 5011374# AOcc: 1146.44h ARunT: 1133.79h ARats: 7.3774/m ADB: 98%  
 (Job started at: 2003-10-20 15:46:03) WkC pl d: PR19 POV: 04# POcc: 0.00h FRunT: C.00s PRsts: 0.0024/m FDB: 0%

Digital images of your shop floor can be used as backgrounds. Dynamically animated icons that are placed on such an image represent particular work-centers, or a group of production resources. These animated icons indicate production activities and the current status of the particular machine.

- A single-click on an icon opens a text block in the status bar at the bottom. The Status bar contains customizable information concerning the active job on the selected production resource.
- A double-click on an icon opens an additional pop-up window (smaller window above). This window displays all production related key information, i.e. operators involved, work-centers and details on past, current and planned production order operations.

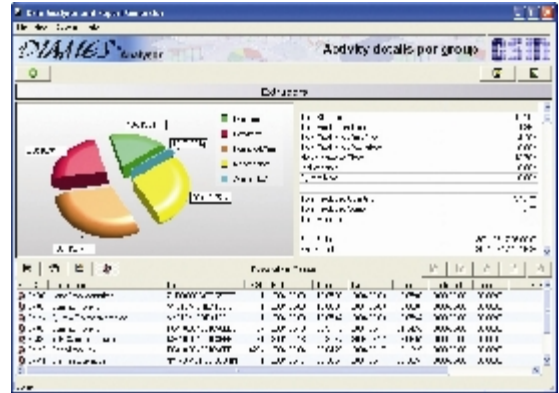
The same window is the gateway to all production-related management functions, too.



The Data Analyzer & Report Generator (DAR) application is another complimentary component of the DIAMES Product Portfolio. This application converts production data into consolidated business specific information. Reports for particular groups of interest are available at a keystroke.

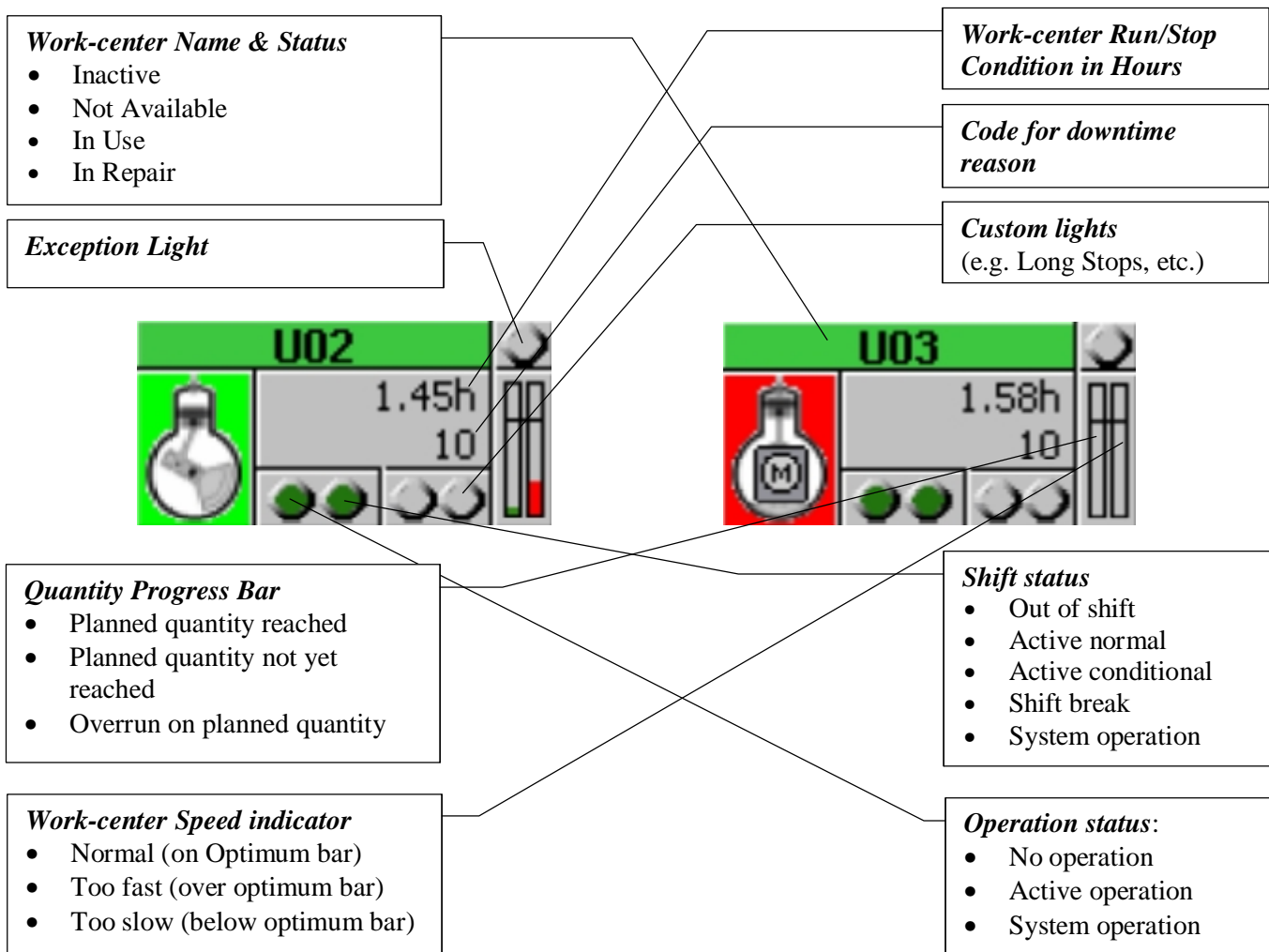
The DAR can be used in stand-alone mode or as integrated function of the DIAMES Manufacturing Execution Manager. Key benchmark figures like Overall Equipment Efficiency (OEE) are available online – even during an active shift.

For further details, please consult the DIAMES-DAR pamphlet.



## Work-centre icons

The icons below represent two work-centers. Machine U03 is indicated stopping, machine U02 running. All icon properties, i.e. background colors, lamp functions and progress bars may be customized to cater for your particular business environment and personal preferences.



*Description of the unique work-centre icon of the DIAMES Manufacturing Execution Manager*

Two “custom lights” that can be assigned to DIAMES specific exceptions. This feature may be used to immediately highlight two of the most critical production conditions, i.e. “Too many operators signed on”, “Current production rate too low”. DIAMES currently recognizes more than fifty exceptions.

